

**11 YEARS**  
WARRANTY\*  
\* SEE WARRANTY TERMS

**DGS**  
**MONSTER**

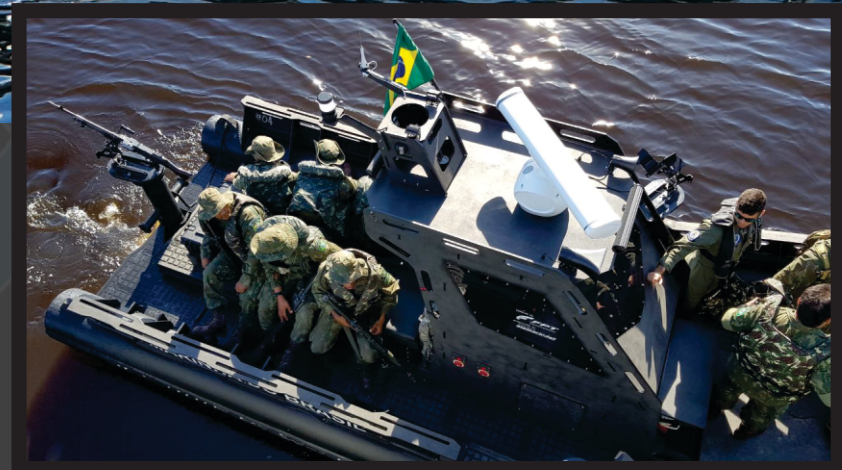
**'THE WORLD'S FIRST'  
MILITARY BOAT  
DESIGNED FOR YOU**



# BORN IN THE BATTLEFIELD



Since 2007 designing and building  
the world's advanced EHT<sup>®</sup> Military  
Armored Tactical Vessels





# BROTHERS IN ARMS



PEACEKEEPING MISSIONS



SEA  
MISSION  
WEATHER

PROVEN PERFORMANCE IN EXTREME CONDITIONS







Ready for extreme  
fun missions





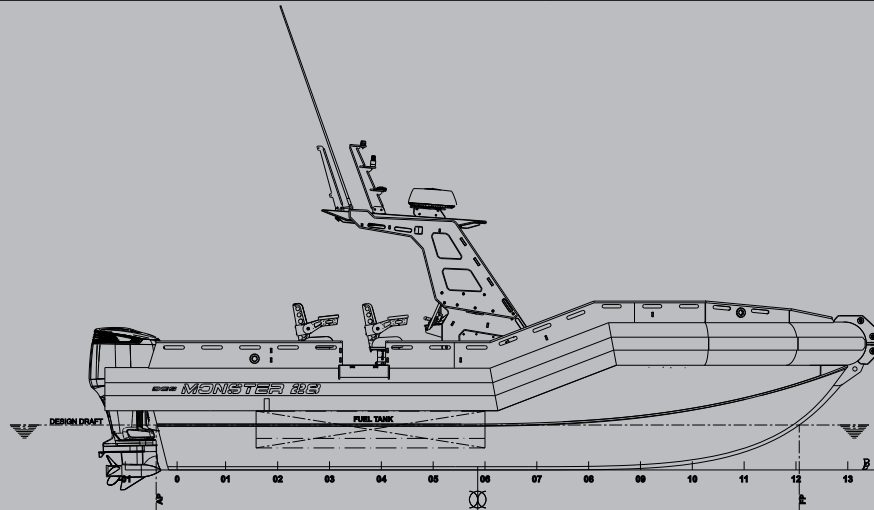
# THE LOWEST TCO\* IN THE MARINE INDUSTRY

\* Total Cost of Ownership

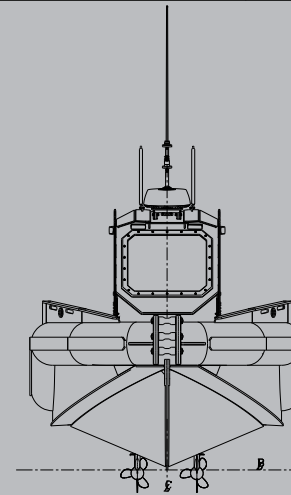


Safety  
Innovation  
Endurance

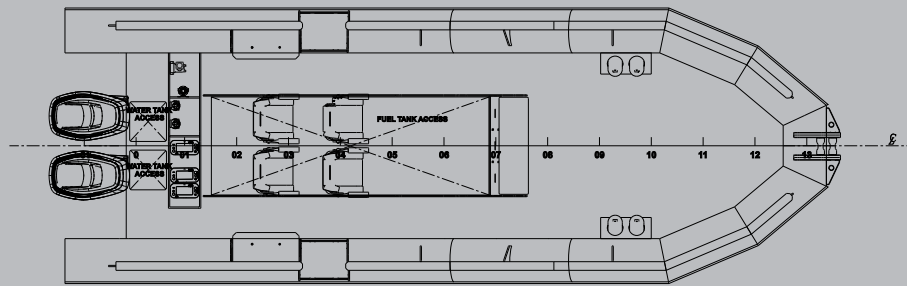




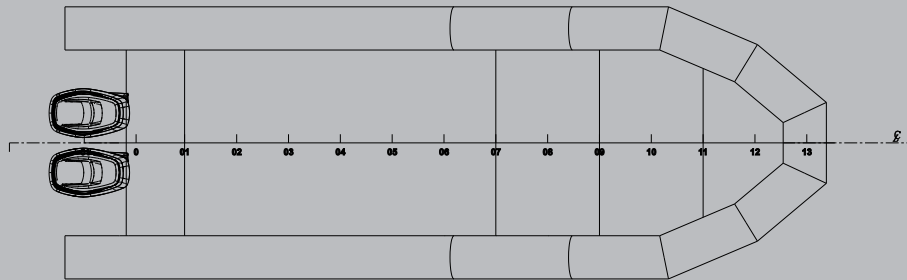
PROFILE VIEW



FRONT VIEW



DECK VIEW



BOTTOM VIEW

Length Overall (LOA)	29.5'
Beam Overall (BOA)	10.5'
Draft (Engine Trimmed Up)	2.0'
Deadrise at Transom	23 degrees
Max HP	800
Fuel Cap (gal)	180
Max Persons	16
Displacement (Light)	8000 lbs
Displacement (Full Load)	12000 lbs

THIS DRAWING IS PROPERTY OF DGS DEFENSE CORP. IT'S PROHIBITED REPRODUCTION AND DISSEMINATION WITHOUT AUTHORIZATION



Drawing title:		GENERAL ARRANGEMENT	
Drawn by:	DATE	Rev:	0
Checked by:	DATE	Design number:	DGS MONSTER 28
Designed by:	DATE	Scale:	Units: mm Sheet: 1/1



# ENGINEERED HYBRID THERMOPLASTIC

**11 YEARS WARRANTY\***  
\* SEE WARRANTY TERMS



EHT hull does not propagate flames



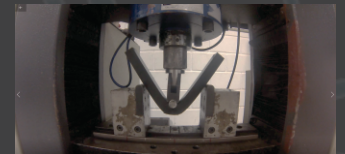
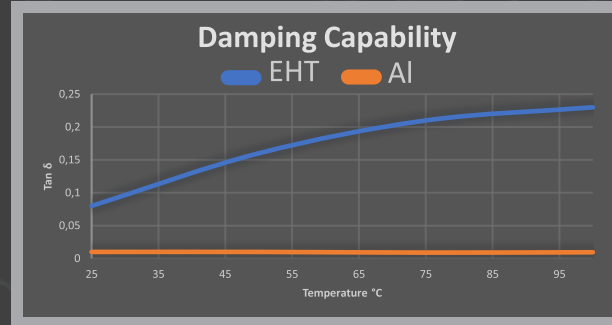
EHT hull density is less than the water



EHT hull is high impact resistant



DGS Monster 28 EHT hull has higher damping capability than aluminum and fiberglass boats.



Military-grade anti-skid deck



Ultra low cost maintenance



DGS EHT has a low fouling anchorage surface



DGS EHT does not need polishing



DGS EHT does not need paint repairs



DGS EHT does not crack



DGS EHT  
100% recyclable





[www.dgsmonster.com](http://www.dgsmonster.com)

@ dgsmonster

954 589 5828

7429 Riviera Blvd. Unit 15  
Miramar FL 33023



[www.dgsdefense.com](http://www.dgsdefense.com)  
[contact@dgsdefense.com](mailto:contact@dgsdefense.com)